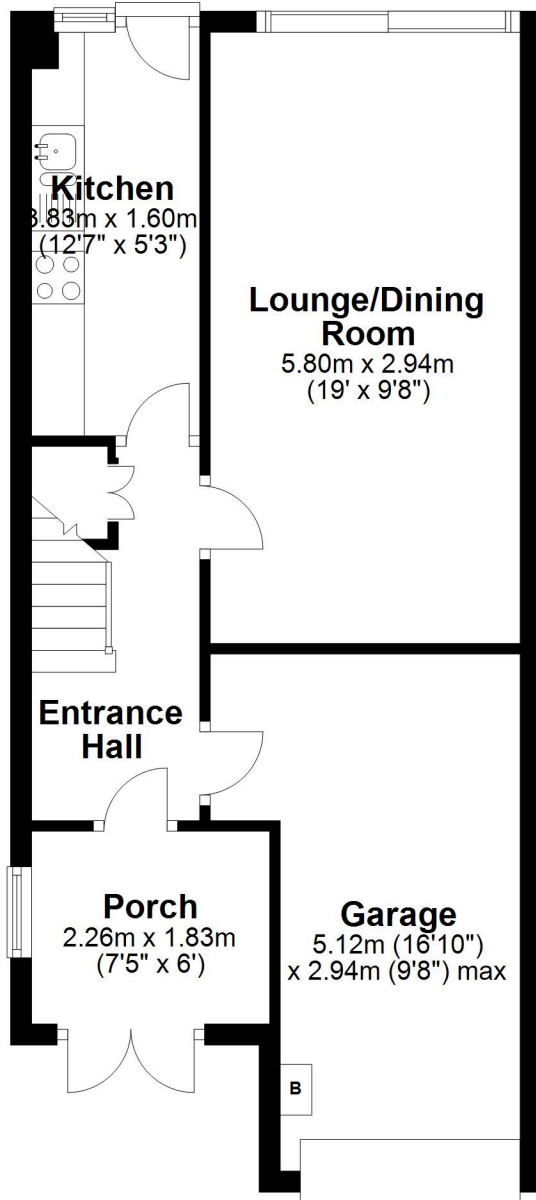


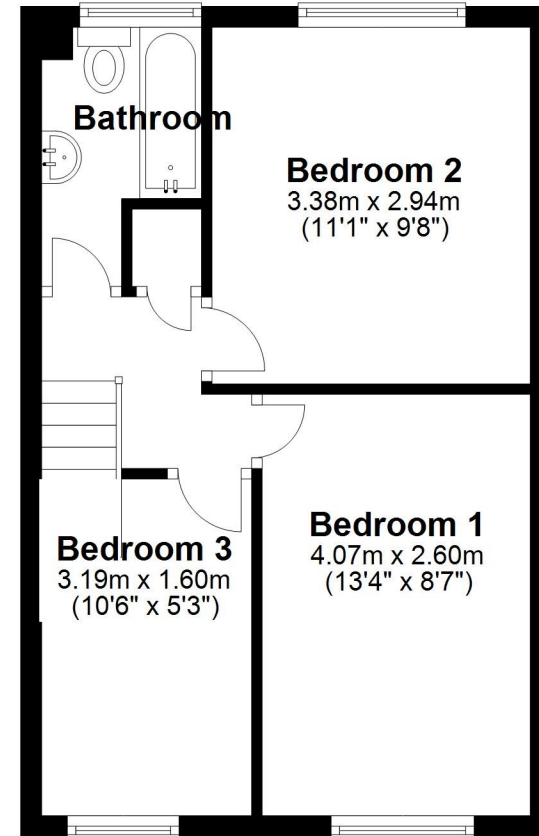
Ground Floor

Approx. 46.8 sq. metres (504.1 sq. feet)



First Floor

Approx. 31.8 sq. metres (342.4 sq. feet)



Total area: approx. 78.6 sq. metres (846.4 sq. feet)

Please note this floor plan is for marketing purposes and is to be used as a guide only. All efforts have been made to ensure its accuracy.
Plan produced using PlanUp.